

THERE IS



ONLY ONE BEAN BAG

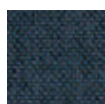
XXXXXXXXXXXXXXXXXXXXXXXXXXXX

AVENUE

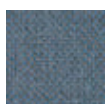
XXXXXXXXXXXXXXXXXXXXXXXXXXXX



AVAILABLE COLOURS



BLUE
900.0730



STEEL BLUE
900.0731



ANTHRACITE
900.0732



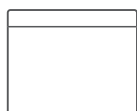
GREY
900.0733



LIGHT GREY
900.0734

AVENUE FACTS

60 x 60 x 47 CM



Material
**EPS CORE WITH COMFY
FOAM TOP, SUNBRELLA
FABRICS**

Weight product
4 KG

Dimensions product
60 x 60 x 49 CM

Dimensions packaging (LxWxH)
60 x 60 x 72 CM

Weight product+packaging
6 KG

Washing Instructions
• Wipe clean with a moist cloth or
water and soap
• Wash outerbag at 40C
• Wash inside out



Batchnumber
In the cover on a white label

Features
• Luxurious seating comfort
• Modular system (make as big as you want!)
• Washable cover
• Super strong core
• Suitable for in- and outdoor use

User recommendations
• Treat the Avenue like a regular
garden cushion and store it
indoors when it rains
• Iron your Avenue on a regular basis
to maintain its water-repellence.



XXXXXXXXXXXXXXXXXXXXXXXXXXXX

ATTACKLE!

XXXXXXXXXXXXXXXXXXXXXXXXXXXX



AVAILABLE COLOURS



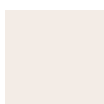
ANTHRACITE
900.6750



GREY
900.6751



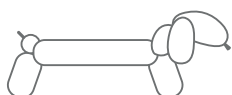
LIGHT GREY
900.6752



WHITE
900.6753

ATTACKLE FACTS

190 x 77.5 x 55 CM
SEATING HEIGHT
49.3 CM



Material
PE

Weight product
18.5 KG

Dimensions product
195 x 77.5 x 55 CM
49.3 CM (seating height)

Dimensions packaging (LxWxH)
60 x 60 x 110 CM

Weight product+packaging
19.5 KG

Washing instructions
Easy cleaning with lukewarm water and neutral soap

Features
• **Super strong rotation moulded bench**
• **Seats 2 adults**
• **Easy to assemble**
• **Suitable for in- and outdoor use**
• **Comes in 7 parts**



INDOOR



OUTDOOR

× ×

BABOESJKA

× ×

fatboy®



AVAILABLE COLOURS



PESSOA AZUL
900.6313



AMALIA AZUL
900.6314



EUSEBIO CINZA
900.6315



AMALIA CINZA
900.6316



LISBOA
AMARELO
900.6317



EUSEBIO
AMARELO
900.6318



PESSOA CINZA
900.6319



AMALIA ROSA
900.6320



LISBOA ROSA
900.6321



PESSOA ROSA
900.6322



ALI BABA BLUE
900.6323



ALI BABA RED
900.6325



ALI BABA TAUPE
900.6326

BABOESJKA FACTS

47 x 47 x 52 CM



Material pillow
POLYESTER
Material belt
LEATHER

Stuffing
PSG FOAM

Weight product
5 KG

Dimensions product (LxWxH)
47 x 47 x 52 CM

Dimensions packaging (LxWxH)
47 x 47 x 52 CM

Weight product+packaging
5.5 KG

Washing Instructions
Use a wet cloth to gently cleanse
the area by patting it

Batchnumber
In pillow, close to the zipper

Features
• Available in many expressive
patterns
• Ideal 'extra' seat
• Beautiful detailing and 100%
leather belt



INDOOR

BUGGLE-UP



AVAILABLE COLOURS

							
JEANS LIGHT BLUE 900.0627	YELLOW OCHRE 900.0625	PURPLE 900.0626	BLACK 900.0610	RED 900.0611	WHITE 900.0614	LIGHT GREY 900.0620	TAUPE 900.0616
							
LIME GREEN 900.0613	ORANGE 900.0612	PINK 900.0622	TURQUOISE 900.0615	SAND 900.0617	PETROL 900.0623	DARK BLUE 900.0621	BROWN 900.0618

BUGGLE-UP FACTS

190 x 140 CM



Material
POLYESTER

Filling
EPS

Coating
WATER- AND DIRT REPELLENT

Weight product
8.8 KG

Litres
360 L

Dimensions product (LxW)
190 x 140 CM

Dimensions packaging (LxWxH)
60 x 60 x 110 CM

Weight product+packaging
12 KG

User recommendations

- Treat the Buggle-up like a regular garden cushion and store it indoors when it rains
- Intensive use may cause the filling to shrink after a time

With the refill you can completely fill your bag from scratch (350 litre EPS) or refill your bag (100 litre EPS)

Washing Instructions
Lukewarm water & soap

Batchnumber
In the bag, close to the zipper on a white label

Features

- Suitable for in- and outdoor use
- Water- and dirt-repellent fabric
- Effortless adjustment from single to double lounge seating



INDOOR



OUTDOOR

CH-AIR



AVAILABLE COLOURS



CH-AIR
WHITE
900.3200



CH-AIR
SILVER
900.3201



CH-AIR
ANTHRACITE
900.3202



PILLOW
ORANGE
900.3111



PILLOW
GREEN
900.3112



PILLOW
BLACK
900.3113



PILLOW
PINK
900.3114



PILLOW
GREY
900.3115



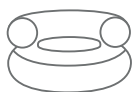
PILLOW
BLUE
900.3116



PILLOW
YELLOW
900.3117

CH-AIR FACTS

135 x 70 CM



Material

Ch-air: **PVC**

Pillow: **HIGH-END FABRICS (SUNBRELLA)**

Stuffing Pillow
2 CM FOAM

Coating Pillow
WATER- AND DIRT REPELLENT

Weight product
Ch-air: **6.5 KG**

Dimensions product (WxH)
Ch-air: **135 x 70 CM**
Pillow: **80 CM Ø**

Dimensions packaging (LxWxH)

37 x 17.5 x 80 CM

Weight product+packaging
Ch-air: **7.5 KG**

User recommendations

- Treat your Ch-air like a regular garden cushion and store it indoors when it rains

Washing Instructions

Clean carefully with soft cloth and lukewarm water (if necessary with neutral soap). Do not use any cleaning materials that contain chemicals

Batchnumber

Ch-air: **Around valve location**

Pillow: **In the cover on a white label**

Features

- The pillow is available in 7 stylish colours combined with the anchor bag
- A stylish and fun inflatable seat
- Accessories; pillow, anchor bag and carrier bag
- It's like sitting on air



INDOOR



OUTDOOR

XXXXXXXXXXXXXXXXXXXXXXXXXXXX

CO₉ MINI

XXXXXXXXXXXXXXXXXXXXXXXXXXXX

fatboy®



AVAILABLE COLOURS



BROWN
900.6602.6



LIME GREEN
900.6602.7



ORANGE
900.6602.8

CO₉ MINI FACTS

30 x 27 x 10 CM



Material
100% COTTON

Stuffing
DACRON FOAM

Coating
**WATER- AND DIRT
REPELLENT**

Weight product
0.22 KG

Dimensions product (LxW)
30 x 27 x 10 CM

Dimensions packaging (LxWxH)
30 x 30 x 10 CM

Weight product+packaging
0.53 KG

Washing Instructions
**Use a wet cloth to gently cleanse
the area by patting it**

Batchnumber
At the back of the right paw

Features
• **Sturdy and indestructible, but also
soft and cuddly**
• **High-quality materials and filling**

Designer: Florentijn Hofman



INDOOR

XXXXXXXXXXXXXXXXXXXXXXXXXXXX

CO₉ XS

XXXXXXXXXXXXXXXXXXXXXXXXXXXX

fatboy®



AVAILABLE COLOURS



GREY
900.6600.5



BROWN
900.6600.6



LIME GREEN
900.6600.7



ORANGE
900.6600.8

CO₉ XS FACTS

180 x 150 CM



Material
100% COTTON

Filling
EPS

Coating
**WATER- AND DIRT
REPELLENT**

Weight product
9 KG

Dimensions product (LxW)
180 x 150 CM

Dimensions packaging (LxWxH)
60 x 60 x 110 CM

Weight product+packaging
10.2 KG

User recommendations
Intensive use may cause the filling to shrink after some time

Washing Instructions
Use a wet cloth to gently cleanse the area by patting it

Batchnumber
In bag, close to zipper behind ears

- Features
- Unique statement piece
 - Oversized bunny for lounging and playing
 - High-quality materials and filling

Designer: Florentijn Hofman



XXXXXXXXXXXXXXXXXXXXXXXXXXXX

CO₉ XXL

XXXXXXXXXXXXXXXXXXXXXXXXXXXX



AVAILABLE COLOURS



BROWN
900.6601.6

CO₉ XXL FACTS

500 x 300 CM



Material
100% COTTON

Filling
EPS

Coating
**WATER- AND DIRT
REPELLENT**

Weight product
150 KG

Dimensions product (LxWxH)
500 x 300 x 130 CM

Dimensions packaging (LxWxH)
120 x 120 x 150 CM (2X BLOCK PALLET)
80 x 120 x 80 CM (4X CARTONS)

Weight product+packaging
200 KG

User recommendations
Intensive use may cause the filling to shrink after some time

Washing Instructions
Use a wet cloth to gently cleanse the area by patting it

Batchnumber
In bag, close to zipper behind ears

- Features
- Unique statement piece
 - Oversized bunny for lounging and playing
 - High-quality materials and filling

Designer: Florentijn Hofman

CONCRETE SEAT



AVAILABLE COLOURS



CONCRETE SEAT
WHITE
900.6700



CONCRETE SEAT
LIGHT GREY
900.6701



CONCRETE SEAT
GREY
900.6702



CONCRETE SEAT
TAUPE
900.6703



CONCRETE SEAT
BROWN
900.6704



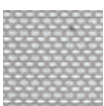
CONCRETE SEAT
ANTHRACITE
900.6705



CONCRETE SEAT
LIGHT GREEN
900.6706



PILLOW
MOSAIC
BROWN
900.6800



PILLOW
CROSSHATCH
GREY
900.6801



PILLOW
MANDARIN
ORANGE
900.6802



PILLOW
BLUEBERRY
BLUE
900.6803



PILLOW
GRAPHITE
GREY
900.6804



PILLOW
SILVER DUST
900.6805



PILLOW PINK
900.6806



PILLOW BLACK
900.6807



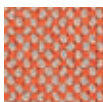
PILLOW BLUE
900.6808



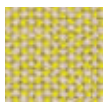
PILLOW GREEN
900.6809



PILLOW PURPLE
900.6810



PILLOW DELUXE
ORANGE
WEAVE
900.6850



PILLOW DELUXE
CITRUS
WEAVE
900.6851

CONCRETE SEAT FACTS

40 x 50 x 43 CM



Material
PE

Weight product
Concrete Seat: **5.4 KG**
Pillow: **0.55 KG**

Dimensions product (LxWxH)
Concrete Seat: **40 x 50 x 43 CM**
Pillow: **40 x 50 x 3 CM**

Dimensions packaging (LxWxH)
Concrete Seat: **47.5 x 47.5 x 53 CM**
Pillow: **47 x 47 x 1.8 CM**

Weight product+packaging
7 KG

User recommendations
Treat your pillow like a regular garden cushion and store it indoors when it rains

Washing Instructions
Easy cleaning with lukewarm water and neutral soap

Features

- The pillow is available in 13 colours and prints
- Stylish and iconic shaped stool (or table)
- Connect multiple Concrete Seats to create a bench
- Mix and match with a large variety of colors and patterns
- Can be used in- and outdoors



INDOOR



OUTDOOR

DOGGIELOUNGE SMALL & LARGE



AVAILABLE COLOURS



BLACK
SMALL: 900.0051
LARGE: 900.0061



RED
SMALL: 900.0052
LARGE: 900.0062



BLUE
SMALL: 900.0051.1
LARGE: 900.0061.1



DARK GREY
SMALL: 900.0059
LARGE: 900.0069



BROWN
SMALL: 900.0057
LARGE: 900.0067



TURQUOISE
SMALL: 900.0051.2
LARGE: 900.0061.2



SAND
SMALL: 900.0056



OLIVE GREEN
SMALL: 900.0051.3
LARGE: 900.0061.3



PINK
SMALL: 900.0053



LIME GREEN
SMALL: 900.0054



ORANGE
SMALL: 900.0055

DOGGIELOUNGE SMALL FACTS

60 x 80 CM

DOGGIELOUNGE LARGE FACTS

120 x 80 CM

Material
NYLON

Filling
EPS

Coating
**WATER- AND DIRT
REPELLENT**

Weight product
Small: **2.33 KG**
Large: **4.82 KG**

Litres
Small: **100 L**
Large: **200 L**

Dimensions product (LxWxH)
Small: **60 x 80 x 15 CM**
Large: **120 x 80 x 15 CM**

Dimensions packaging (LxWxH)
Small: **47 x 47 x 52 CM**
Large: **60 x 60 x 72 CM**

Weight product+packaging
Small: **4 KG**
Large: **7 KG**

User recommendations
• Intensive use may cause the filling to shrink after a time

With the refill you can completely fill your bag from scratch (small: 100 litre EPS, large: 200 litre EPS) or refill your bag (100 litre EPS)

Washing Instructions
Lukewarm water & soap

Batchnumber
In the bag, close to the zipper on a white label

Features
• Made from sturdy, durable material
• Top-quality filling for even more comfort



DOGGIELOUNGE STONEWASHED SMALL & LARGE

+NAMETAG



AVAILABLE COLOURS

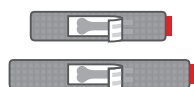
BLACK	RED	BLUE	GREY	BROWN	LIME GREEN	ORANGE	TAUPE	SAND	DARK BLUE
SMALL: 900.0250.1 LARGE: 900.0260.1	SMALL: 900.0250.2 LARGE: 900.0260.2	SMALL: 900.0250.4 LARGE: 900.0260.4	SMALL: 900.0250.5 LARGE: 900.0260.5	SMALL: 900.0250.6 LARGE: 900.0260.6	SMALL: 900.0250.7 LARGE: 900.0260.7	SMALL: 900.0250.8 LARGE: 900.0260.8	SMALL: 900.0250.9 LARGE: 900.0260.9	SMALL: 900.0250.10 LARGE: 900.0260.10	SMALL: 900.0250.11 LARGE: 900.0260.11

DOGGIELOUNGE SMALL STONEWASHED FACTS

60 x 80 CM

DOGGIELOUNGE LARGE STONEWASHED FACTS

120 x 80 CM



Material
100% COTTON

Filling
EPS

Coating
**WATER- AND DIRT
REPELLENT**

Weight product
Small: **2.33 KG**
Large: **4.82 KG**

Litres
Small: **100 L**
Large: **200 L**

Dimensions product (LxWxH)
Small: **60 x 80 x 15 CM**
Large: **120 x 80 x 15 CM**

Dimensions packaging (LxWxH)
Small: **47 x 47 x 52 CM**
Large: **60 x 60 x 72 CM**

Weight product+packaging
Small: **4 KG**
Large: **7 KG**

User recommendations
• Intensive use may cause the filling to shrink after a time

With the refill you can completely fill your bag from scratch (small: 100 litre EPS, large: 200 litre EPS) or refill your bag (100 litre EPS)

Washing Instructions
Wash outerbag at max 30°C (non chlorine bleach). Wash inside out



Batchnumber
In the bag, close to the zipper on a white label

Features
• Strong & durable fabric
• Washable cover
• High-quality filling for extra comfort



INDOOR

DOGGIELOUNGE SMALL NAMETAG S FACTS

30 x 11 CM

DOGGIELOUNGE LARGE NAMETAG L FACTS

40 x 11 CM



Material
100% COTTON

Dimensions product (LxW)
Small: **30 x 11 CM**
Large: **40 x 11 CM**

Number of characters per nametag
Small: **max. 9**
Large: **max. 12**

Washing Instructions
Wash nametag at 40°C



Do not put the nametag in the dryer

Features
• Personalize your Doggielounge with your own nametag



INDOOR

XXXXXXXXXXXXXXXXXXXXXXXXXXXX

JUNIOR

XXXXXXXXXXXXXXXXXXXXXXXXXXXX

fatboy®



AVAILABLE COLOURS



LIME GREEN
900.0503



TURQUOISE
900.0505



OLIVE GREEN
900.0513



BLUE
900.0509



SAND
900.0516



LIGHT PINK
900.0521



PETROL
900.0520



GRASS GREEN
900.0519



YELLOW
900.0518



ICE BLUE
900.0517



BLACK
900.0501



RED
900.0500



WHITE
900.0506



TAUPE
900.0515



SILVER
900.0508



BROWN
900.0507



DARK GREY
900.0510



DARK PURPLE
900.0510



PINK
900.0504



ORANGE
900.0502

JUNIOR FACTS

130 x 100 CM



Material
NYLON

Filling
EPS

Coating
**WATER- AND DIRT
REPELLENT**

Weight product
3 KG

Litres
140 L

Dimensions product (LxW)
130 x 100 CM

Dimensions packaging (LxWxH)
60 x 60 x 72 CM

Weight product+packaging
5 KG

User recommendations
Intensive use may cause the filling to shrink after a time

With the refill you can completely fill your bag from scratch (140 litre) or refill your bag (100 litre)

Washing Instructions
Lukewarm water & neutral soap

Batchnumber

In the bag, close to the zipper on a white label

Features

- The one & only Original
- Countless ways to sit, hang, laze and lounge
- Unique size designed with children and teenagers in mind
- High-quality fabric and filling for long-lasting use



INDOOR

JUNIOR STONEWASHED

fatboy®



AVAILABLE COLOURS



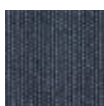
BLACK
900.0290.1



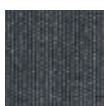
RED
900.0290.2



SILVER GREY
900.0290.3



BLUE
900.0290.4



GREY
900.0290.5



BROWN
900.0290.6



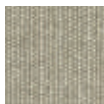
LIME GREEN
900.0290.7



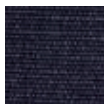
ORANGE
900.0290.8



TAUPE
900.0290.9



SAND
900.0290.10



DARK BLUE
900.0290.11

JUNIOR FACTS

130 x 100 CM



Material
100% COTTON

Filling
EPS

Coating
**WATER- AND DIRT
REPELLENT**

Weight product
3 KG

Litres
140 L

Dimensions product (LxW)
130 x 100 CM

Dimensions packaging (LxWxH)
60 x 60 x 72 CM

Weight product+packaging
5 KG

User recommendations
Intensive use may cause the filling to shrink after a time

With the refill you can completely fill your bag from scratch (140 litre) or refill your bag (100 litre)

Batchnumber
In the bag, close to the zipper on a white label

Washing Instructions

- Machine washable cover
- Use a wet cloth to gently cleanse the area by patting it
- Wash outerbag at max 30° (non chlorine bleach). Wash inside out



Features

- The one & only Original
- Countless ways to sit, hang, laze and lounge
- Unique size designed with children and teenagers in mind
- High-quality fabric and filling for long-lasting use



INDOOR

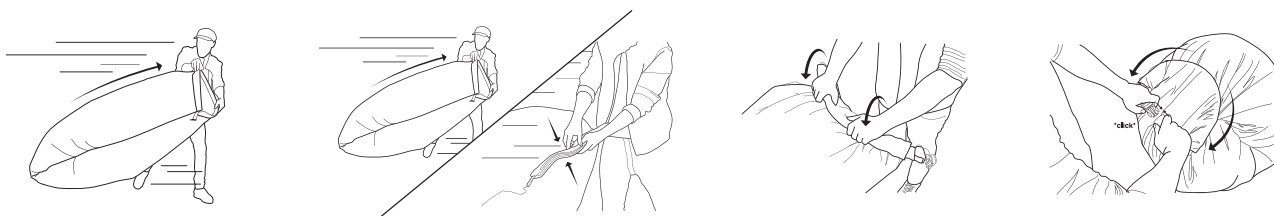
XXXXXXXXXXXXXXXXXXXXXXXXXXXX

LAMZAC HANGOUT

XXXXXXXXXXXXXXXXXXXXXXXXXXXX



easy inflation in just a few steps



AVAILABLE COLOURS



BLUE
L0001



BLACK
L0002



GREEN
L0003



OLIVE GREEN
L0004



PURPLE
L0005



FUCHSIA
L0006



RED
L0007

LAMZAC HANGOUT

FACTS

L= 200 CM
W= 50 CM
H= 90 CM



Material

**NYLON RIPSTOP COVER,
HIGH-DENSITY INNER BAG
POLYETHYLENE BAG**

Weight product

1.2 KG

Dimensions product (LxWxH)

200 x 50 x 90 CM

Dimensions packaging (LxWxH)

35.5 x 25 x 7.6 CM

Weight product+packaging

1.5 KG

Washing Instructions

- Gently pat the soiled area with a moist cloth



Batchnumber

In the cover and in the bag
on a white label

Features

- Luxurious lounge chair
- Easy inflation in a few steps
- Super strong (holds up to 200 kg)
- Water repellent

User recommendations

- Store the Lamzac indoors after use
- For technical details and advice check the manual (included in box)



INDOOR



OUTDOOR

XXXXXXXXXXXXXXXXXXXXXXXXXXXX

ORIGINAL

XXXXXXXXXXXXXXXXXXXXXXXXXXXX

fatboy®



AVAILABLE COLOURS

									
LIME GREEN 900.0007	TURQUOISE 900.0115	OLIVE GREEN 900.0122	BLUE 900.0004	SAND 900.0132	LIGHT PINK 900.0137	PETROL 900.0136	GRASS GREEN 900.0135	YELLOW 900.0134	ICE BLUE 900.0133
									
BLACK 900.0001	RED 900.0002	WHITE 900.0113	TAUPE 900.0124	SILVER 900.0003	BROWN 900.0006	DARK GREY 900.0005	DARK PURPLE 900.0123	PINK 900.0111	ORANGE 900.0008

ORIGINAL FACTS

180 x 140 CM



Material
NYLON

Filling
EPS

Coating
**WATER- AND DIRT
REPELLENT**

Weight product
6.8 KG

Litres
360 L

Dimensions product (LxW)
180 x 140 CM

Dimensions packaging (LxWxH)
60 x 60 x 110 CM

Weight product+packaging
10 KG

User recommendations
**Intensive use may cause the filling to
shrink after a time**

**With the refill you can completely fill
your bag from scratch (350 litre) or
refill your bag (100 litre)**

Washing Instructions
Lukewarm water & neutral soap

Batchnumber
**In the bag, close to the zipper on a
white label**

- Features
- The one & only Original
 - Countless ways to sit, hang, laze and lounge
 - High-quality nylon fabric and filling for long-lasting use
 - Indoor use only



INDOOR

XXXXXXXXXXXXXXXXXXXXXXXXXXXX

ORIGINAL STONEWASHED

XXXXXXXXXXXXXXXXXXXXXXXXXXXX



AVAILABLE COLOURS



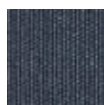
BLACK
900.0270.1



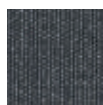
RED
900.0270.2



SILVER GREY
900.0270.3



BLUE
900.0270.4



GREY
900.0270.5



BROWN
900.0270.6



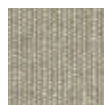
LIME GREEN
900.0270.7



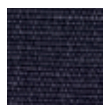
ORANGE
900.0270.8



TAUPE
900.0270.9



SAND
900.0270.10



DARK BLUE
900.0270.11

ORIGINAL STONEWASHED FACTS

180 x 140 CM



Material
100% COTTON

Filling
EPS

Coating
WATER- AND DIRT REPELLENT

Weight product
6.8 KG

Litres
360 L

Dimensions product (LxW)
180 x 140 CM

Dimensions packaging (LxWxH)
60 x 60 x 110 CM

Weight product+packaging
10 KG

Washing Instructions

- Use a wet cloth to gently cleanse the area by patting it
- Machine washable cover
- Wash outerbag at max 30° (non chlorine bleach). Wash inside out



User recommendations

Intensive use may cause the filling to shrink after a time

With the refill you can completely fill your bag from scratch (350 litre) or refill your bag (100 litre)

Batchnumber

In the bag, close to the zipper on a white label

Features

- The one & only Original
- Countless ways to sit, hang, laze and lounge
- 100% luxury cotton
- High-quality filling for long-lasting use
- Machine-washable cover

ORIGINAL METAHLOWSKI

fatboy®



AVAILABLE COLOURS



BRONZO
900.0127



SILVI
900.0126



TITANO
900.0128



GOLDI
900.0125

ORIGINAL METAHLOWSKI FACTS

180 x 140 CM



Material
POLYESTER & COTTON

Filling
EPS

Coating
**WATER- AND DIRT
REPELLENT**

Weight product
6.8 KG

Litres
360 L

Dimensions product (LxW)
180 x 140 CM

Dimensions packaging (LxWxH)
60 x 60 x 110 CM

Weight product+packaging
10 KG

User recommendations
Intensive use may cause the filling to shrink after a time

With the refill you can completely fill your bag from scratch (350 litre) or refill your bag (100 litre)

Washing Instructions
Lukewarm water & neutral soap

Batchnumber
In the bag, close to the zipper on a white label

Features

- The one & only Original
- Countless ways to sit, hang, laze and lounge
- High-quality fabric and filling for long-lasting use

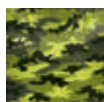


ORIGINAL CAMOUFLAGE

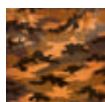
fatboy®



AVAILABLE COLOURS



CAMOUFLAGE
GREEN
900.0138



CAMOUFLAGE
ORANGE
900.0139

ORIGINAL CAMOUFLAGE FACTS

180 x 140 CM



Material
POLYESTER

Filling
EPS

Coating
**WATER- AND DIRT
REPELLENT**

Weight product
6.8 KG

Litres
360 L

Dimensions product (LxW)
180 x 140 CM

Dimensions packaging (LxWxH)
60 x 60 x 110 CM

Weight product+packaging
10 KG

User recommendations
Intensive use may cause the filling to shrink after a time

With the refill you can completely fill your bag from scratch (350 litre) or refill your bag (100 litre)

Washing Instructions
Lukewarm water & neutral soap

Batchnumber
In the bag, close to the zipper on a white label

- Features
- The one & only Original in a specially designed pattern
 - Countless ways to sit, hang, laze and lounge
 - High-quality filling for long-lasting use
 - Indoor use only



XXXXXXXXXXXXXXXXXXXXXXXXXXXX

ORIGINAL OUTDOOR

XXXXXXXXXXXXXXXXXXXXXXXXXXXX



AVAILABLE COLOURS



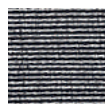
CYTRUS
900.0241



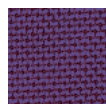
TAUPE
900.0243



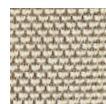
NAVY BLUE
900.0244



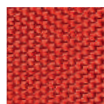
CHARCOAL
900.0246



PLUM
900.0254



SAND
900.0255



RED
900.0257



AUBERGINE
900.0258

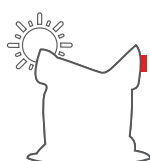


PINK
900.0262



MINERAL BLUE
900.0263

ORIGINAL OUTDOOR FACTS 180 x 140 CM



Material
**SUNBRELLA FABRIC
UV RESISTANT**

Filling
EPS

Coating
**WATER- AND DIRT
REPELLENT**

Weight product
6.8 KG

Litres
360 L

Dimensions product (LxW)
180 x 140 CM

Dimensions packaging (LxWxH)
60 x 60 x 110 CM

Weight product+packaging
10 KG

User recommendations

- Intensive use may cause the filling to shrink after a time
- With the refill you can completely fill your bag from scratch (350 litre) or refill your bag (100 litre)
- Iron your Original on a regular basis to maintain its water-repellence
- When not in use, store inside

Washing Instructions

- Wipe clean with a moist cloth or water and soap

- Wash outerbag at 40C
- Wash inside out



Batchnumber

In the bag, close to the velcro on a white label

Features

- The one & only Original for outdoor use!
- Countless ways to sit, hang, laze and lounge
- For in- and outdoor use
- Water repellent Sunbrella fabric with excellent colour fastness (100% solution dyed acrylic)
- Machine washable cover



INDOOR



OUTDOOR

XXXXXXXXXXXXXXXXXXXXXXXXXXXX

POINT

XXXXXXXXXXXXXXXXXXXXXXXXXXXX

fatboy®



AVAILABLE COLOURS



BLACK
900.0031



RED
900.0032



SILVER
900.0033



BLUE
900.0034



DARK GREY
900.0035



BROWN
900.0036



LIME GREEN
900.0037



ORANGE
900.0038



PINK
900.0141



DARK PURPLE
900.0148



WHITE
900.0143



TURQUOISE
900.0145



OLIVE GREEN
900.0147



TAUPE
900.0149



SAND
900.0152



ICE BLUE
900.0153



YELLOW
900.0154



GRASS GREEN
900.0155



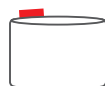
PETROL
900.0156



LIGHT PINK
900.0157

POINT FACTS

35 x 50 CM



Material
NYLON

Filling
EPS

Coating
**WATER- AND DIRT
REPELLENT**

Weight product
1.55 KG

Litres
100 L

Dimensions product (LxW)
35 x 50 CM

Dimensions packaging (LxWxH)
47 x 47 x 52 CM

Weight product+packaging
3 KG

User recommendations

- Intensive use may cause the filling to shrink after a time
- With the refill you can completely fill your Point from scratch (100 litre)

Washing Instructions
Lukewarm water & neutral soap

Batchnumber
In the bag, close to the zipper on a white label

Features

- An ideal addition to any living space
- High-grade material and special filling guarantee extra comfort
- Available in a big range of colours



INDOOR

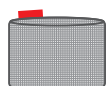
POINT STONEWASHED



AVAILABLE COLOURS

					
BLACK 900.0170.1	RED 900.0170.2	SILVER GREY 900.0170.3	BLUE 900.0170.4	GREY 900.0170.5	BROWN 900.0170.6
					
LIME GREEN 900.0170.7	ORANGE 900.0170.8	TAUPE 900.0170.9	SAND 900.0170.10	DARK BLUE 900.0170.11	

POINT STONEWASHED
FACTS
 35 x 50 CM



Material
100% COTTON

Filling
EPS

Coating
**WATER- AND DIRT
 REPELLENT**

Weight product
1.55 KG

Litres
100 L

Dimensions product (LxW)
35 x 50 CM Ø

Dimensions packaging (LxWxH)
47 x 47 x 52 CM

Weight product+packaging
3 KG

User recommendations
 • Intensive use may cause the filling to shrink after a time
 • With the refill you can completely fill your Point from scratch (100 litre)

Washing Instructions
 Use a wet cloth to gently cleanse the area by patting it

Batchnumber
 In the bag, close to the zipper on a white label

Features
 • An ideal addition to any living space
 • High-grade material and special filling guarantee extra comfort
 • Available in a big range of colours
 • 100% luxury cotton

XXXXXXXXXXXXXXXXXXXXXXXXXXXX

PFFFFH

XXXXXXXXXXXXXXXXXXXXXXXXXXXX



AVAILABLE COLOURS



GREEN
900.0740



BLUE
900.0741



ORANGE
900.0742



DARK GREY
900.0743

PFFFFH FACTS

90 Ø x 40 CM



Material
**EPS CORE WITH COMFY
FOAM TOP, SUNBRELLA
FABRIC**

Weight product
7.6 KG

Dimensions product
90 Ø x 40 CM

Dimensions packaging (LxWxH)
92 x 92 x 42 CM

Weight product+packaging
9 KG

Washing Instructions
• Wipe clean with a moist cloth
or water and soap

Batchnumber
In the cover on a white label

Features

- Luxurious seating comfort
- Super strong core
- Suitable for in- and outdoor use

User recommendations

- Treat the Pffffh like a regular garden cushion and store it indoors when it rains
- Iron your Pffffh on a regular basis to maintain its water-repelling.



INDOOR



OUTDOOR

TSJONGE-JONGE



AVAILABLE COLOURS



TSJONGE
LIGHT GREY
900.0900



TSJONGE
DARK GREY
900.0901



TSJONGE
ORANGE
900.0902



TSJONGE
GREEN
900.0903



JONGE
LIGHT GREY
902.0900



JONGE
DARK GREY
902.0901



JONGE
ORANGE
902.0902



JONGE
GREEN
902.0903



BACKREST
LIGHT GREY,
901.0901



BACKREST
DARK GREY
901.0905



BACKREST
CIRCLES WHITE
901.0902



BACKREST
CIRCLES YELLOW
901.0903



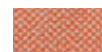
BACKREST
CIRCLES ORANGE
901.0906



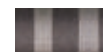
BACKREST
CIRCLES GREEN
901.0907



BACKREST
CITRUS WEAVE
901.0904



BACKREST
ORANGE WEAVE
901.0908



BACKREST
STRIPES
901.0909

TSJONGE-JONGE FACTS

BACKREST

32 CM Ø x 87 CM

TSJONGE

90 x 100 x 40 CM

JONGE

90 x 65 x 40 CM

Material

**HIGH-END FABRICS
(SUNBRELLA & DE PLOEG)
PVC BOTTOM
NYLON RIPSTOP COVER**

Stuffing

**EPS
FOAM**

Weight product

Tsjonge: **11 KG**
Jonge: **6 KG**

Dimensions product (LxWxH)

Tsjonge: **90 x 100 x 40 CM**
Jonge: **90 x 65 x 40 CM**
Backrest: **32 CM Ø x 87 CM**

Dimensions packaging (LxWxH)

Tsjonge: **79.5 x 59.5 x 121 CM**
Jonge: **60 x 60 x 110 CM**
Backrest: **60 x 60 x 72 CM**

Weight product+packaging

Tsjonge: **8.5 KG**
Jonge: **6 KG**
Backrest: **4 KG**

User recommendations

When not in use, store inside

Features

- Optimal seating comfort
- Suitable for in- and outdoor use
- High-end in- and outdoor fabrics
- Handy cover to protect T-J outdoors against UV and rain
- Anti slip bottom



INDOOR



OUTDOOR

REFILL



AVAILABLE COLOURS



WHITE 100 L
900.9900



WHITE 350 L
900.9901

REFILL FACTS 100 L

Material
EPS

Weight product
2.5 KG

Litres
100 L

Dimensions packaging (LxWxH)
47 x 47 x 52 CM

Weight product+packaging
3 KG

User recommendations
• **Intensive use may cause the filling to shrink after a time**

REFILL FACTS 350 L

Material
EPS

Weight product
6.1 KG

Litres
350 L

Dimensions packaging (LxWxH)
60 x 60 x 110 CM

Weight product+packaging
8 KG

User recommendations
• **Intensive use may cause the filling to shrink after a time**



INDOOR



OUTDOOR

HEADDEMOCK



AVAILABLE COLOURS



BLACK
900.1010



RED
900.1011



ORANGE
900.1012



LIME GREEN
900.1013



WHITE
900.1015



TURQUOISE
900.1016



TAUPE
900.1017



BROWN
900.1018



LIGHT GREY
900.1110



DARK BLUE
900.1111



PINK
900.1112



PETROL
900.1113



SAND
900.1114



YELLOW OCHRE
900.1115



PURPLE
900.1116



JEANS LIGHT
BLUE
900.1117

HEADDEMOCK FACTS HAMMOCK & FRAME 330 x 110 CM



Material
Hammock: **POLYESTER**
Frame: **METAL AND RUBBER**

Stuffing
Hammock:
100% POLYESTER FIBERFILL

Coating
Hammock: **WATER- AND
DIRT REPELLENT**
Frame: **POWDER COATING**

Weight product
Hammock: **14 KG**
Frame: **14 KG**
Hammock & Frame: **28 KG**

Dimensions product (LxWxH)
Hammock & Frame:
330 x 127 x 110 CM
Hammock: **330 x 127 CM**

Dimensions packaging (LxWxH)
Hammock & Frame:
80 x 30 x 120 CM
Hammock: **80 x 30 x 120 CM**
Frame: **23 x 23 x 130 CM**

Weight product+packaging
Hammock & Frame: **32 KG**
Hammock: **16 KG**
Frame: **16 KG**

User recommendations
• **Treat your Headdemock like a regular garden cushion and store it indoors when it rains**
• **Can hold up to 150 KG**

Washing Instructions
Lukewarm water & neutral soap

Batchnumber
Hammock:
In the bag on a white label
Frame:
In the bag on a white label

Features
• **Sturdy frame with extra-large hammock**
• **Comes with 2 handy carrier bags**
• **Durable and water-repellent fabric**



OUTDOOR

XXXXXXXXXXXXXXXXXXXXXXXXXXXX

HEADDEMCK

PILLOW & COVER

XXXXXXXXXXXXXXXXXXXXXXXXXXXX



AVAILABLE COLOURS



PILLOW JEANS
LIGHT BLUE
900.2417



PILLOW YELLOW
OCHRE
900.2415



PILLOW PURPLE
900.2416



PILLOW BLACK
900.2400



PILLOW RED
900.2401



PILLOW WHITE
900.2405



PILLOW LIGHT
GREY
900.2410



PILLOW TAUPE
900.2407



PILLOW LIME
GREEN
900.2403



PILLOW
ORANGE
900.2402



PILLOW PINK
900.2412



PILLOW
TURQUOISE
900.2406



PILLOW SAND
900.2414



PILLOW PETROL
900.2413



PILLOW DARK
BLUE
900.2411



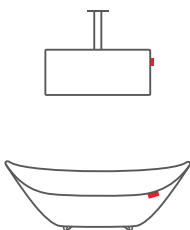
PILLOW BROWN
900.2408



COVER
900.1027

HEADDEMCK FACTS PILLOW & COVER

52 x 41,5 x 22 CM & 30 x 25 x 23 CM



Material

Pillow: **METAL AND
POLYESTER**

Cover: **NYLON RIPSTOP**

Stuffing

Pillow: **100% POLYESTER FIBERFILL**

Weight product

Pillow: **0.85 KG**
Cover: **1.05 KG**

Dimensions product (LxWxH)

Pillow: **52 x 41,5 x 22 CM**
Cover: **30 x 25 x 23 CM**

Dimensions packaging (LxWxH)

Pillow: **70 x 30 x 13 CM**
Cover: **45 x 25 x 7 CM**

Weight product+packaging

Pillow: **1.65 KG**
Cover: **1.35 KG**

User recommendations

**Treat your pillow like a
regular garden cushion and
store it indoors when it rains**

Washing Instructions

Lukewarm water & neutral soap

Batchnumber

Cover:
In the cover bag on a white label

Features

- Pillow:
- Keeps you relaxed
- Cover:
- Keeps your Headdemock dry



OUTDOOR

XXXXXXXXXXXXXXXXXXXXXXXXXXXX

CANDYOFNIE

XXXXXXXXXXXXXXXXXXXXXXXXXXXX



*And this is just one of
3.637.682.549.757.080
possibilities.*

COLLECT THEM ALL!

AVAILABLE COLOURS



LIGHT GREEN



LIGHT BLUE



RASPBERRY



TAUPE



YELLOW



DARK GREY



PURPLE



GREEN



DARK BROWN



EMERALD RED



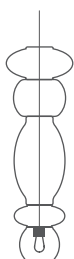
BLUE

*There are 8 unique shapes
to choose from. This is
just one of them.*

**SEE OTHER SIDE FOR ALL SHAPES
AND ARTICLE NUMBERS**

CANDYOFNIE FACTS

H= 180 CM (cable)
W= 47.5 CM (max)



Material outer
PS / PC / ABS

LED Kelvin
2700

Weight product
0.5 KG (without shapes)

Dimensions product
H= 180 CM (cable)
W= 30 CM (max)

Dimensions packaging (LxWxH)
*The size of packaging
depends on the choice
and quantity of your
favourite candy*

Weight product+packaging
Electric parts and inner box 0.5 KG.
*Other weights depend on choice
and quantity*

User recommendations

- Do not use chemical cleaning products
- Remote control and lamp need to be paired, follow the instruction in the manual
- Due to the integrated dimmer, the lamp cannot be used in combination with an external dimmer

Watt
4 WATT

Cleaning Instructions

Wipe clean with a soft and moist cloth or water and soap (with power switched off)

Batchnumber

On white sticker inside the ceiling cap

Features

- Beading your own lampshade
- Combine several shapes and colours up to 3.637.682.549.757.080 possibilities!
- Replaceable Fatboy lightbulb included (contact your local dealer or fatboy.com for replaceables)
- Controllable with radio frequency remote control and continuously dimmable
- Radio frequency remote reaches up to 10 m
- 2 colours of ceiling kits included

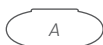


INDOOR

CANDYOFNIE

ARTICLE NUMBERS

800.4050.A1	candy A light green
800.4050.A2	candy A light blue
800.4050.A3	candy A raspberry
800.4050.A4	candy A taupe
800.4050.A5	candy A yellow
800.4050.A6	candy A dark grey
800.4050.A7	candy A purple
800.4050.A8	candy A green
800.4050.A9	candy A dark brown
800.4050.A10	candy A emerald red
800.4050.A11	candy A blue



800.4050.F1	candy F light green
800.4050.F2	candy F light blue
800.4050.F3	candy F raspberry
800.4050.F4	candy F taupe
800.4050.F5	candy F yellow
800.4050.F6	candy F dark grey
800.4050.F7	candy F purple
800.4050.F8	candy F green
800.4050.F9	candy F dark brown
800.4050.F10	candy F emerald red
800.4050.F11	candy F blue



800.4050.B1	candy B light green
800.4050.B2	candy B light blue
800.4050.B3	candy B raspberry
800.4050.B4	candy B taupe
800.4050.B5	candy B yellow
800.4050.B6	candy B dark grey
800.4050.B7	candy B purple
800.4050.B8	candy B green
800.4050.B9	candy B dark brown
800.4050.B10	candy B emerald red
800.4050.B11	candy B blue



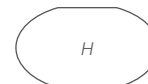
800.4050.G1	candy G light green
800.4050.G2	candy G light blue
800.4050.G3	candy G raspberry
800.4050.G4	candy G taupe
800.4050.G5	candy G yellow
800.4050.G6	candy G dark grey
800.4050.G7	candy G purple
800.4050.G8	candy G green
800.4050.G9	candy G dark brown
800.4050.G10	candy G emerald red
800.4050.G11	candy G blue



800.4050.C1	candy C light green
800.4050.C2	candy C light blue
800.4050.C3	candy C raspberry
800.4050.C4	candy C taupe
800.4050.C5	candy C yellow
800.4050.C6	candy C dark grey
800.4050.C7	candy C purple
800.4050.C8	candy C green
800.4050.C9	candy C dark brown
800.4050.C10	candy C emerald red
800.4050.C11	candy C blue



800.4050.H1	candy H light green
800.4050.H2	candy H light blue
800.4050.H3	candy H raspberry
800.4050.H4	candy H taupe
800.4050.H5	candy H yellow
800.4050.H6	candy H dark grey
800.4050.H7	candy H purple
800.4050.H8	candy H green
800.4050.H9	candy H dark brown
800.4050.H10	candy H emerald red
800.4050.H11	candy H blue



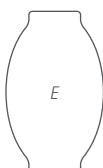
800.4050.D1	candy D light green
800.4050.D2	candy D light blue
800.4050.D3	candy D raspberry
800.4050.D4	candy D taupe
800.4050.D5	candy D yellow
800.4050.D6	candy D dark grey
800.4050.D7	candy D purple
800.4050.D8	candy D green
800.4050.D9	candy D dark brown
800.4050.D10	candy D emerald red
800.4050.D11	candy D blue



ASSORTI SETS

900.4050.3	Fatboy® candyofnie assorti set for 3 candies
900.4050.4	Fatboy® candyofnie assorti set for 4 candies
900.4050.5	Fatboy® candyofnie assorti set for 5 candies
900.4050.6	Fatboy® candyofnie assorti set for 6 candies
900.4050.7	Fatboy® candyofnie assorti set for 7 candies
900.4050.8	Fatboy® candyofnie assorti set for 8 candies

800.4050.E1	candy E light green
800.4050.E2	candy E light blue
800.4050.E3	candy E raspberry
800.4050.E4	candy E taupe
800.4050.E5	candy E yellow
800.4050.E6	candy E dark grey
800.4050.E7	candy E purple
800.4050.E8	candy E green
800.4050.E9	candy E dark brown
800.4050.E10	candy E emerald red
800.4050.E11	candy E blue



XXXXXXXXXXXXXXXXXXXXXXXXXXXX

EDISON THE PETIT

XXXXXXXXXXXXXXXXXXXXXXXXXXXX



AVAILABLE COLOURS



WHITE
900.4012

EDISON THE PETIT FACTS

H= 25 CM
W= 16 CM



Material outer
PP

Material inner
ABS BASEPLATE WITH LED HOUSING

LED Kelvin
2700

Weight product
1 KG

Dimensions product
**H= 25 CM
W= 16 CM**

Dimensions packaging (LxWxH)
30.5 x 19 x 19 CM

Weight product+packaging
1.5 KG

User recommendations

For technical details and advice
check the manual (included in box)
Use only with the electric charger
supplied

Watt
1 WATT

Lumen
43

Lux
4.1

Battery type
LI-POLYMER

Voltage
5V

IP 21 (LAMP)
MICRO USB (PLUG)
SPLASH RESISTANT

Duration
**1: 24 hours
2: 15 hours
3: 6 hours**

Cleaning Instructions
Wipe clean with a moist cloth or
water and soap

Batchnumber
Bottom sticker serial number

Features
• 3 different light settings
• Wireless
• Chargeable
• For in- and outdoor use



INDOOR



OUTDOOR

XXXXXXXXXXXXXXXXXXXXXXXXXXXX

EDISON THE MEDIUM

XXXXXXXXXXXXXXXXXXXXXXXXXXXX



AVAILABLE COLOURS

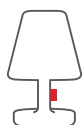


WHITE
900.4020

EDISON THE MEDIUM

FACTS

H= 51 CM
W= 32 CM



Material outer
PE

Material inner
**ALUMINUM BASEPLATE
WITH LED HOUSING**

LED Kelvin
2700

Weight product
3 KG

Dimensions product
**H= 51 CM
W= 32 CM**

Dimensions packaging (LxWxH)
34 x 34 x 52 CM

Weight product+packaging
4 KG

Watt
5 WATT

Lumen
211

Lux
15.3

**IP 55 (LAMP)
IP 44 (PLUG)
SPLASH RESISTANT**

User recommendations
*For technical details and advice
check the manual (included in box)*

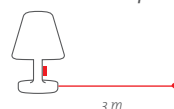
Cleaning Instructions

Clean carefully with soft cloth and lukewarm water (if necessary with neutral soap) Do not use any cleaning materials that contain chemicals

Batchnumber
Bottom of the lamp

Features

- Medium size, maximum style
- Splash resistant, suitable for in- and outdoor use
- Controllable with remote control, continuously dimmable
- Remote reaches up to 10 meters



INDOOR



OUTDOOR

XXXXXXXXXXXXXXXXXXXXXXXXXXXX

EDISON THE GRAND

XXXXXXXXXXXXXXXXXXXXXXXXXXXX



AVAILABLE COLOURS

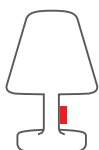


WHITE
900.4003

EDISON THE GRAND

FACTS

H= 90 CM
W= 60 CM



Material outer
PE

Material inner
**ALUMINUM BASEPLATE
WITH LED HOUSING**

LED Kelvin
2700

Weight product
13 KG

Dimensions product
**H= 90 CM
W= 60 CM**

Dimensions packaging (LxWxH)
60 x 60 x 95 CM

Weight product+packaging
17 KG

Watt
14
Lumen
686

Lux
39.2

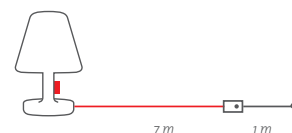
**IP 55 (LAMP)
IP 44 (PLUG)
SPLASH RESISTANT**

User recommendations
**For technical details and advice
check the manual (included in box)**

Cleaning Instructions
**Dirt- and moisture repellent, easy
cleaning with lukewarm water and
neutral soap**

Batchnumber
Bottom transformer serial number

Features
• Controllable with remote control,
continuously dimmable
• Innovative LED technology
• For in- and outdoor use



Transformer and control button with
3 dimmer settings LED-lighting



INDOOR



OUTDOOR

XXXXXXXXXXXXXXXXXXXXXXXXXXXX

LAMPIE-ON

XXXXXXXXXXXXXXXXXXXXXXXXXXXX



AVAILABLE COLOURS



NORMAL
900.4070



DELUXE
900.4071



DELUXE
900.4071



DELUXE
900.4071

LAMPIE-ON FACTS

H= 32 CM
W= 13.5 CM



Material outer
PC

LED Kelvin
2700

Weight product
0.35 KG

Dimensions product
H= 25.5 CM
W= 13.5 CM

Dimensions packaging (WxH)
17.8 Ø x 30 CM

Weight product+packaging
0.77 KG / 0.86 KG (deluxe)

User recommendations

*For technical details and advise
check the manual (included in box)
Use only with the electric charger
supplied*

Watt
1 WATT

Battery type
LI-POLYMER

Voltage
3.7 V

IP 21 (LAMP)
MICRO USB (PLUG)
SPLASH RESISTANT

Duration

100% BRIGHTNESS: 9 hours

Cleaning Instructions

*Wipe clean with a moist cloth or
water and soap*

Batchnumber

Bottom sticker with serial number

Features

- Stepless dimable
- Chargeable
- Portable

ROCKCOCO



COMES WITH HANDY CEILING KIT



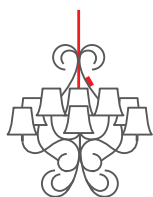
AVAILABLE COLOURS



TRANSPARENT
900.4201

ROCKCOCO FACTS

H= 62 CM
W= 68 CM



Material
POLYCARBONATE

LED Kelvin
2200

Weight product
6 KG

Dimensions product
**H= 62 CM
W= 68 CM**

Dimensions packaging (LxWxH)
28 x 27 x 73 CM

Weight product+packaging
8 KG

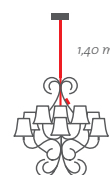
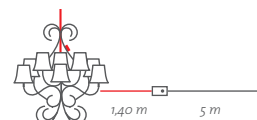
Watt
10 x 1 WATT

Lumen
168

**IP 55 (LAMP)
IP 44 (PLUG)**

Features

- The first outdoor LED chandelier in the world
- Warm LED light, suitable for in- and outdoor use
- Controllable with remote control, continuously dimmable
- Remote reaches up to 10 meters
- UV resistant
- Splash-resistant
- Ceiling kit included



Transformer and control button
Continuously dimmable



INDOOR



OUTDOOR

XXXXXXXXXXXXXXXXXXXXXXXXXXXX

TRANSLOETJE

XXXXXXXXXXXXXXXXXXXXXXXXXXXX



AVAILABLE COLOURS



TRANSPARENT
900.4040



GREEN
900.4041



YELLOW
900.4042



BLUE
900.4043



ORANGE
900.4044



VIOLET
900.4045



BROWN
900.4046



GREY
900.4047

TRANSLOETJE FACTS

H= 25.5 CM
W= 16.5 CM



Material outer
PC

LED Kelvin
2700

Weight product
0.5 KG

Dimensions product
**H= 25.5 CM
W= 16.5 CM**

Dimensions packaging (LxWxH)
17.5 x 17.5 x 30.5 CM

Weight product+packaging
1.11 KG

User recommendations

For technical details and advice
check the manual (included in box)
Use only with the electric charger
supplied

Watt
2 x 1 WATT

Battery type
LI-POLYMER

Voltage

3.7 V

**IP 21 (LAMP)
MICRO USB (PLUG)
SPLASH RESISTANT**

Duration

**SETTING 1: 20 hours
SETTING 2: 15 hours
SETTING 3: 9 hours**

Cleaning Instructions

Wipe clean with a moist cloth or
water and soap

Batchnumber

Bottom sticker with serial number

Features

- 3 different light settings
- Adjustable by the touch of a finger
- Chargeable
- Portable

SNACKLIGHT



AVAILABLE COLOURS



RED
900.4030



ORANGE
900.4031



GREEN
900.4032



YELLOW
900.4033



WHITE
900.4034



BLUE
900.4035

SNACKLIGHT FACTS

LAMP
18.5 CM X 13.5 CM
TRAY
3 CM X 55 CM



Material
Lamp: **PP**
Tray: **METAL**
Bowls: **PP**

Weight product
Lamp: **0.33 KG**
Tray: **1.8 KG**
Bowls: **PP**

Dimensions product
Lamp: **18.5 CM X 13.5 CM**
Tray: **3 CM X 55 CM**
Bowls: **3.5 CM X 15 CM**

Dimensions packaging (LxWxH)
60 x 60 x 17 CM

Weight product+packaging
4 KG

Watt
1 WATT

Battery type
LI-POLYMER

Voltage
5 V

Duration
6.5 HOURS (100%)

IP 21 (LAMP)
MICRO USB PLUG
SPLASH RESISTANT

Washing instructions
Wipe clean with a moist cloth or a
dust rag. Bowls are not microwave
and dishwasher proof

Batchnumber
Sticker on the bottom

Features
• Beautiful tray and lamp all-in-one
• Perfect combination of sturdy
metal with strong synthetics
• Rechargeable
• For in- and outdoor use
• Lamp and tray connect with
magnets
• Includes 3 bowls with anti slip
bottom
• 3 different light settings
• Combines perfectly with snackrack
to create a stylish table



INDOOR



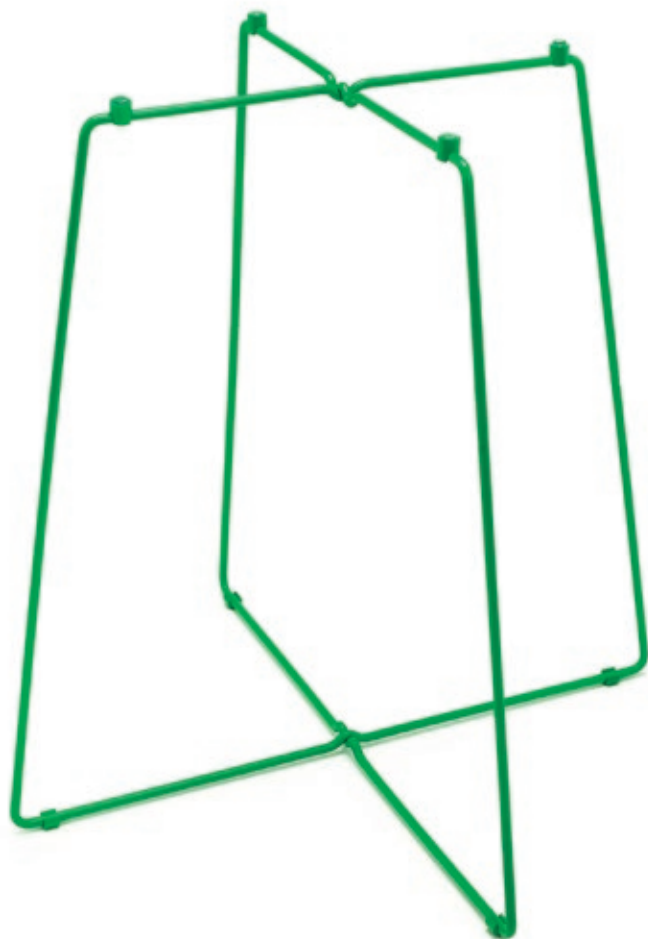
OUTDOOR

XXXXXXXXXXXXXXXXXXXXXXXXXXXX

SNACKRACK

XXXXXXXXXXXXXXXXXXXXXXXXXXXX

fatboy®



AVAILABLE COLOURS



RED
900.6530



ORANGE
900.6531



GREEN
900.6532



YELLOW
900.6533



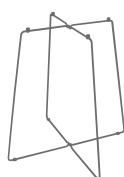
WHITE
900.6534



BLUE
900.6535

SNACKRACK FACTS

45 x 45 CM



Material

**POWDER COATED METAL
WITH INTEGRATED
MAGNETS TO STABILIZE
YOUR SNACKLIGHT (6 MM
WIRE METAL)**

Weight product

0.5 KG

Dimensions product

45 CM X 45 CM

Dimensions packaging (LxWxH)

46 x 46 x 2 CM

Weight product+packaging

0.5 KG

Washing instructions

Wipe clean with a moist cloth or a dust rag

Features

- Magnetic click system to stabilize your Snacklight
- Reversible (use both ways – up and down!)
- Easy to assemble
- Suitable for in- and outdoor use



INDOOR



OUTDOOR

XXXXXXXXXXXXXXXXXXXXXXXXXXXX

SNACKLIGHT + SNACKRACK

XXXXXXXXXXXXXXXXXXXXXXXXXXXX



AVAILABLE COLOURS



RED
900.6530.1



ORANGE
900.6531.1



GREEN
900.6532.1



YELLOW
900.6533.1



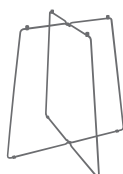
WHITE
900.6534.1



BLUE
900.6535.1

SNACKRACK FACTS

45 x 45 CM



Material

Lamp: **PP**

Tray: **METAL**

Bowls: **PP**

Snackrack: **POWDER COATED METAL WITH INTEGRATED MAGNETS TO STABILIZE YOUR SNACKLIGHT (6 MM WIRE METAL)**

Weight product

Lamp: **0.33 KG**

Tray: **1.8 KG**

Bowls: **PP**

Snackrack: **0.5 KG**

Dimensions product

Lamp: **18.5 CM X 13.5 CM**

Tray: **3 CM X 55 CM**

Bowls: **3.5 CM X 15 CM**

Snackrack: **45 CM X 45 CM**

Dimensions packaging (LxWxH)

59 x 59 x 18 CM

Weight product+packaging

4 KG

Snacklight Watt

1 WATT

Snacklight Battery type

LI-POLYMER

Snacklight Voltage

5 V

Snacklight Duration

6.5 HOURS (100%)

IP 21 (LAMP)

**MICRO USB PLUG
SPLASH RESISTANT**

Washing instructions

Wipe clean with a moist cloth or a dust rag. Bowls are not microwave and dishwasher proof

Features

- Beautiful tray and lamp all-in-one
- Perfect combination of sturdy metal with strong synthetics
- Rechargeable lamp
- Lamp and tray connect with magnets
- Includes 3 bowls with anti slip bottom
- 3 different light settings
- Magnetic click system to stabilize your Snacklight on the Snackrack
- Reversible (use both ways - up and down!)
- Easy to assemble
- Suitable for in- and outdoor use



INDOOR



OUTDOOR

SPHEREMAKER



AVAILABLE COLOURS



LIGHT GREEN
800.4060.1



LIGHT BLUE
800.4060.2



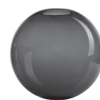
RASPBERRY
800.4060.3



TAUPE
800.4060.4



YELLOW
800.4060.5



DARK GREY
800.4060.6



PURPLE
800.4060.7



GREEN
800.4060.8



DARK BROWN
800.4060.9



EMERALD RED
800.4060.10



BLUE
800.4060.11

ASSORTI SETS

FATBOY® SPHEREMAKER ASSORTI SET 1 (3 PCS)

900.4061

FATBOY® SPHEREMAKER ASSORTI SET 2 (6 PCS)

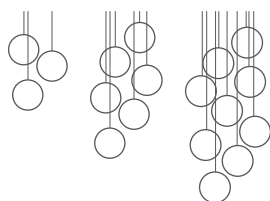
900.4062

FATBOY® SPHEREMAKER ASSORTI SET 3 (9 PCS)

900.4063

SPHEREMAKER FACTS

H= 205 CM (max)
H= 175 CM (cable)
W= 30 CM (3 spheres)
W= 45 CM (6 spheres)
W= 60 CM (9 spheres)



Material

PC, ABS, METAL AND PS SPHERES

LED Kelvin

2700

Weight product

3: 2.51 KG
(Electric part 1.85 KG + Spheres 0.66 KG)
6: 4.82 KG
(Electric part 3.5 KG + Spheres 1.32 KG)
9: 7.33 KG
(Electric part 5.35 KG + Spheres 1.98 KG)

Dimensions product

3: 30 CM
6: 45 CM
9: 60 CM
(heights are adjustable)

Dimensions packaging (LxWxH)

3: 79.3 x 32.5 x 33.5 CM
6: 79.3 x 53.5 x 33 CM
9: 79.3 x 79.5 x 33.5 CM

Weight product+packaging

3: 4.6 KG
6: 7.55 KG
9: 11.75 KG

User recommendations

- Do not use chemical cleaning products
- Due to the integrated dimmer, the lamp cannot be used in combination with an external dimmer
- Remote control and lamp need to be paired, follow the instruction in the manual

Watt

3: 12 WATT
6: 24 WATT
9: 36 WATT

Cleaning Instructions

Wipe clean with a soft and moist cloth or water and soap (with power switched off)

Batchnumber

On white sticker inside ceiling kit

Features

- Multiple sphere LED lamp
- Easy to assemble
- Controllable with remote control and continuously dimmable
- Radio frequency remote control reaches up to 10 m
- Ceiling kit included
- Fatboy replaceable LED bulbs included (contact your local dealer or fatboy.com for replaceables)
- Adjustable heights and widths with included magnets and clamps
- Make your own composition and combination

XXXXXXXXXXXXXXXXXXXXXXXXXXXX

SUPERCHARGER

XXXXXXXXXXXXXXXXXXXXXXXXXXXX

fatboy®



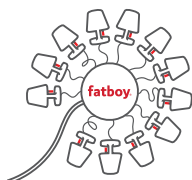
AVAILABLE COLOURS



BLACK
900.4021

SUPERCHARGER FACTS

145 x 38 CM



Material
POLYCARBONATE

Weight product
1 KG

Dimensions product
H= 38 CM
W= 145 CM

Dimensions packaging (LxWxH)
33 x 24 x 5.2 CM

Weight product+packaging
1.1 KG

User recommendations

Check the sticker at the cable to connect the USB plug in the correct way (right side up)

Batchnumber
Sticker on the bottom

Features

- Charge up to 12 ETP's or Snacklight in one go!



XXXXXXXXXXXXXXXXXXXXXXXXXXXX

COOPER CAPPIE

XXXXXXXXXXXXXXXXXXXXXXXXXXXX

fatboy®



AVAILABLE PRINTS

HORSE RACE 900.4310	CAR RACE 900.4311	DOGGIE RACE 900.4309	PLAID RED 900.4313	PLAID BLUE 900.4312	BRUSSELS 900.4306	GHEENT 900.4305	ANTWERP 900.4304	PORTO BLUE 900.4308	PORTO PINK 900.4307
PIGGY 900.4315	GRANNY 900.4314	MR BLUE 900.4301	MR PINK 900.4302	MR ORANGE 900.4303	FATIMA 900.4321	MOUNIR 900.4320	ALI 900.4319	AISCHA 900.4318	WHITELIGHT 900.4316
BLACKLIGHT 900.4317	BABY BOY 900.4322	BABY GIRL 900.4323	CANDLELIGHT 900.4324	GLOBETROTTER 900.4325	SKULL BLACK 900.4326	PARTY TIME 900.4327	FIREPLACE 900.4328	WILLEM GOLD 900.4329	BABY MICE 900.4330
JUDY GARLAND 900.4331	ESPADA PLUM PURPLE 900.4333	ESPADA GREEN 900.4334	ESPADA BLUE 900.4335	ESPADA GREY 900.4336	ESPADA PINK 900.4337	ESPADA KIW GREEN 900.4338	ESPADA PEACH PINK 900.4339	ESPADA BLUEBERRY BLUE 900.4340	CAMOUFLAGE GREEN 900.4341
CAMOUFLAGE ORANGE 900.4341	MRS KIW GREEN 900.4343	MRS PEACH PINK 900.4344	MRS BLUEBERRY BLUE 900.4345	MRS PLUM PURPLE 900.4346	MRS GREEN 900.4347	MRS BLUE 900.4348	MRS GREY 900.4349	MRS PINK 900.4350	MR GREEN 900.4351
MR GREY 900.4352	MR AQUA 900.4353	VENZ BLUE 900.4354	VENZ BLACK 900.4355	VENZ RED 900.4356					

COOPER CAPPIE FACTS

49 x 14 CM



Material
POLYPROPYLENE

Dimensions product (LxW)
49 x 14 CM

Weight product
0.026 KG

Dimensions packaging (LxWxH)
20 x 50 CM

Weight product+packaging
0.09 KG

Features

- Customize your Edison The Petit
- 55 designs to suit any interior, mood or party theme
- Packed in an envelope



INDOOR



OUTDOOR

XXXXXXXXXXXXXXXXXXXXXXXXXXXX

DO-IT-YOURSELF COOPER CAPPIES

XXXXXXXXXXXXXXXXXXXXXXXXXXXX



AVAILABLE COLOURS



TRANSPARENT
900.4332

DO-IT-YOURSELF COOPER CAPPIE FACTS

49 x 14 CM



Material
**CARDBOARD,
POLYPROPYLENE
AND SYNTHETICS**

Dimensions product (LxW)
49 x 14 CM

Weight product
0.25 KG

Dimensions packaging (LxWxH)
20 x 50 CM

Weight product+packaging
0.5 KG

Features

- Design and create your own Cooper Cappsies!
- Use over and over again, as many times as you like
- Including examples and multi-colored markers
- Packed in an envelope
- Comes with three Cappsies



INDOOR

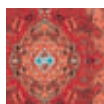


OUTDOOR

PICNIC LOUNGE



AVAILABLE COLOURS



PICNIC LOUNGE
900.6120

PICNIC LOUNGE FACTS



Material
**TOP: POLYESTER
BOTTOM: POLYESTER WITH
PVC COATING**

Stuffing
FOAM

Coating
**WATER- AND DIRT
REPELLENT**

Weight product
5.3 KG

Dimensions product (LxW)
210 x 280 CM

Dimensions packaging (LxWxH)
25 x 25 x 69 CM

Weight product+packaging
7.3 KG

Batchnumber
Inside Fatboy label

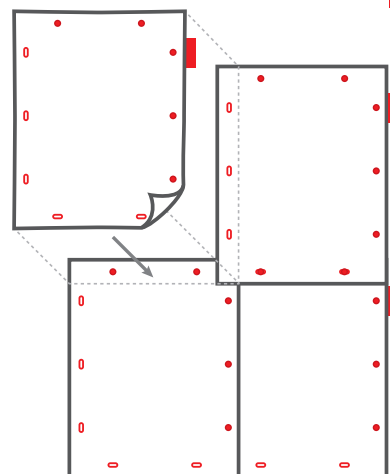
Washing Instructions
**Clean by wiping it with a moist cloth
or water and neutral soap.
Exposure to direct sunlight can
cause colour fading**

- Features
- Supersized picnic blanket for your whole family and all of your friends
 - Rolls up like a handy carrier bag, with pins as well as brush included
 - Specially designed pattern
 - Water repellent top and bottom

XXXXXXXXXXXXXXXXXXXXXXXXXXXX

NON-FLYING CARPET

XXXXXXXXXXXXXXXXXXXXXXXXXXXX



Match and connect



CONNECT WITH THESE
RED RUBBER FATBOY
BUTTONS

AVAILABLE COLOURS



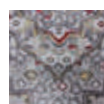
SMALL PERSIAN
LIME
900.6401



SMALL PERSIAN
ORANGE
900.6402



BIG PERSIAN
LIME
900.6403



BIG PERSIAN
YELLOW
900.6404



CASABLANCA
PURPLE
900.6434



CASABLANCA
TURQUOISE
900.6435



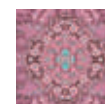
CASABLANCA
GREEN
900.6436



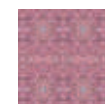
CORIANDER
900.6413



THYME
900.6414



SAFFRON
900.6415



SUMAC
900.6416



CINNAMON
900.6417



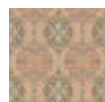
ALLSPICE
900.6418



ANICE
900.6419



FENNEL
900.6420



CARAWAY
900.6421



GINGER
900.6422



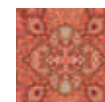
CARDAMOM
900.6423



JUNIPER
900.6424



CAYENNE
900.6425



CHILI
900.6426



PAPRIKA
900.6427

FLYING CARPET FACTS

180 x 140 CM



Material
**POLYESTER
& PVC BOTTOM**

Stuffing
5 MM FOAM

Coating
**WATER- AND DIRT
REPELLENT**

Weight product
4 KG

Dimensions product (LxW)
180 x 140 CM

Dimensions packaging (LxWxH)
22 x 22 x 140 CM

Weight product+packaging
6 KG

User recommendations
• Exposure to UV light can cause colour fading
• When not in use, store inside

Washing Instructions
Wipe clean with a moist cloth or water and soap

Batchnumber
On the label at the bottom

Features
• Comfortable top and anti-slip bottom
• Make it as big or small as you want with the rubber Fatboy buttons
• Specially designed patterns and fabrics
• Water-repellent fabric and bottom



INDOOR



OUTDOOR

XXXXXXXXXXXXXXXXXXXXXXXXXXXX

BOUQUETTEKETET

XXXXXXXXXXXXXXXXXXXXXXXXXXXX



BASE AVAILABLE IN 6 COLOURS
(SOLD SEPARATELY)

AVAILABLE PRINT



BOUQUETTEKETET
900.5021

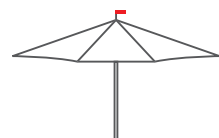
BOUQUETTEKETET FACTS

CLOTH

350 CM Ø

POLE

3.8 CM Ø X 287 CM



Material

**METAL FRAME WITH
POLYESTER PARASOL
CLOTH (PRINTED)**

Weight product

13.5 KG

Dimensions product

Cloth: **350 CM Ø**

Pole: **3.8 CM Ø X 287 CM**

Dimensions packaging (LxWxH)

186 x 21 x 23 CM

Weight product+packaging

15.5 KG

Batchnumber

Cloth: *On the inside of the cloth*

Pole: *On the inside of the white cover*

Features

- Automatic mechanism (just pull the cord)
- Comes with handy cover
- Matches Formitable XL
- With unique flag
- Suitable for outdoor use



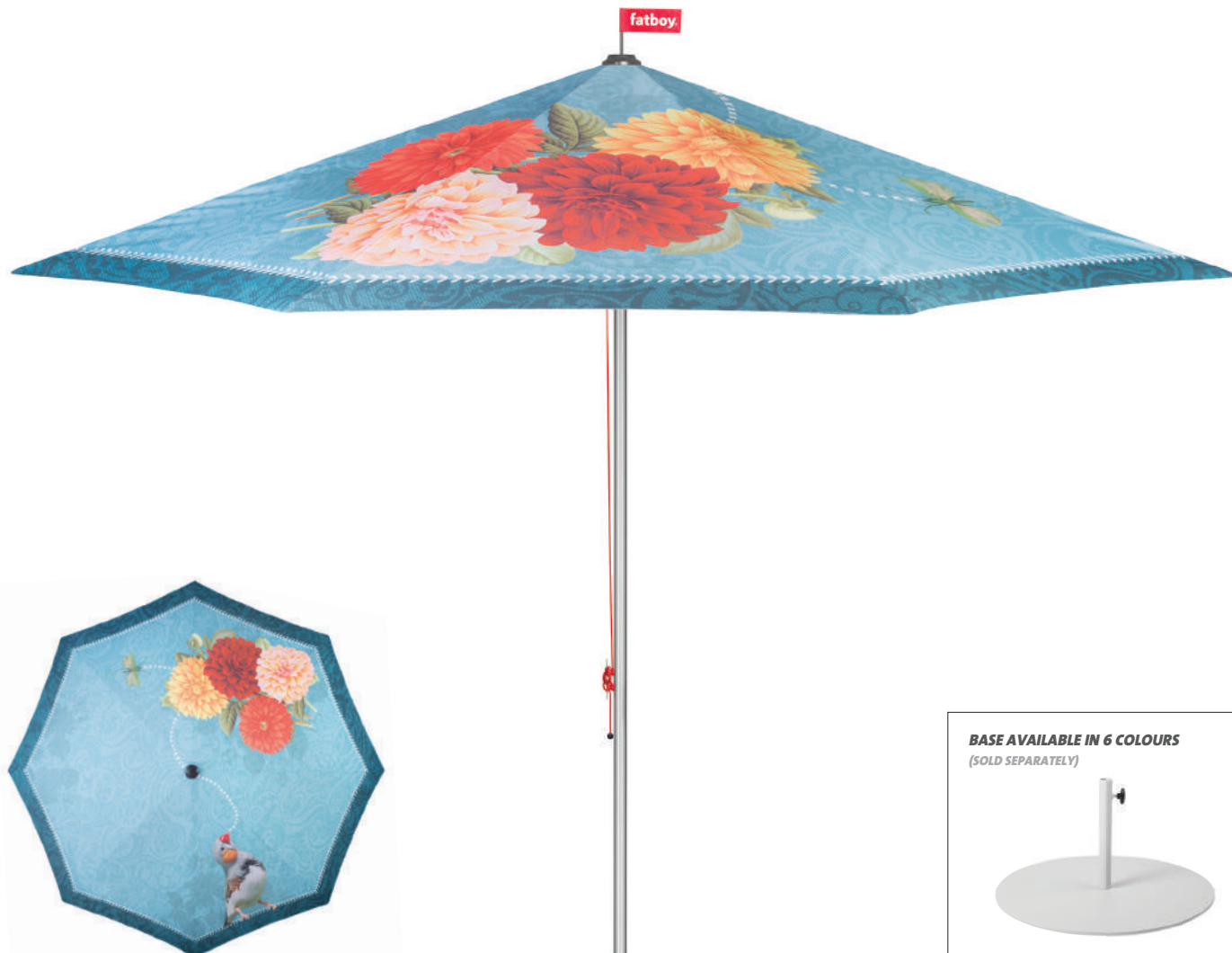
OUTDOOR

XXXXXXXXXXXXXXXXXXXXXXXXXXXX

PARASOLASIDO

XXXXXXXXXXXXXXXXXXXXXXXXXXXX

fatboy®



BASE AVAILABLE IN 6 COLOURS
(SOLD SEPARATELY)



AVAILABLE PRINT



PARASOLASIDO
900.5020

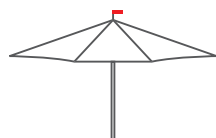
PARASOLADISO FACTS

CLOTH

350 CM Ø

POLE

3.8 CM Ø X 287 CM



Material

**METAL FRAME WITH
POLYESTER PARASOL
CLOTH (PRINTED)**

Weight product

13.5 KG

Dimensions product

Cloth: **350 CM Ø**

Pole: **3.8 CM Ø X 287 CM**

Dimensions packaging (LxWxH)

186 x 21 x 23 CM

Weight product+packaging

15.5 KG

Batchnumber

Cloth: *On the inside of the cloth*

Pole: *On the inside of the white cover*

Features

- Automatic mechanism (just pull the cord)
- Comes with handy cover
- Matches Formitable XL
- With unique flag
- Suitable for outdoor use



OUTDOOR

XXXXXXXXXXXXXXXXXXXXXXXXXXXX

STRIPESOL

XXXXXXXXXXXXXXXXXXXXXXXXXXXX

fatboy®



BASE PLATE (SOLD SEPARATELY)



AVAILABLE COLOURS



ANTHRACITE
900.5005



INDUSTRIAL
GREEN
900.5006



TAUPE
900.5007



ORANGE
900.5008



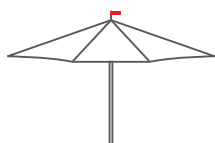
LIGHT GREY
900.5009



RED
900.5010

STRIPESOL FACTS

CLOTH
350 CM Ø
POLE
38 MM Ø



Material
**METAL FRAME WITH
POLYESTER PARASOL
CLOTH (PRINTED)**

Weight product
13 KG

Dimensions product
Cloth: **350 CM Ø**
Pole: **38 MM Ø**

Dimensions packaging (LxWxH)
187 x 21 x 21 CM

Weight product+packaging
15 KG

Batchnumber
Cloth: *On the inside of the cloth*
Pole: *On the inside of the white cover*

Features
• **Automatic mechanism**
(just pull the cord)
• **Comes with handy cover**
• **Matches Formitable XL**
• **With unique flag**
• **Suitable for outdoor use**

BASE 900.5100
70 CM



Material
STEEL

Coating
BLACK POWDER COAT

Weight product
25 KG

Dimensions product (Ø)
70 CM Ø
44 MM Ø

Dimensions packaging (LxWxH)
72 x 72 x 6 CM

Weight product+packaging
27.5 KG



OUTDOOR

XXXXXXXXXXXXXXXXXXXXXXXXXXXX

FORMITABLE XS

XXXXXXXXXXXXXXXXXXXXXXXXXXXX



AVAILABLE COLOURS



ANTHRACITE
910.0010



INDUSTRIAL
GREEN
910.0011



TAUPE
910.0012



ORANGE
910.0013



LIGHT GREY
910.0014



RED
910.0015

FORMITABLE XS FACTS

76 CM X 80 CM Ø
FLOOR PLATE
55 CM Ø



Material

GALVANISED METAL
POWDER COATED IN
FINE TEXTURE

Weight product
22 KG

Dimensions product
76 CM X 80 CM Ø
Floor plate: **55 CM Ø**

Dimensions packaging (LxWxH)
82 x 82 x 12 CM

Weight product+packaging
22.5 KG

Washing instructions

*Easy cleaning with lukewarm water
and neutral soap*

Features

- Easy to assemble (flat pack)
- Perfect size to fit anywhere
- Suitable for in- and outdoor use



INDOOR



OUTDOOR

XXXXXXXXXXXXXXXXXXXXXXXXXXXX

FORMITABLE XL

XXXXXXXXXXXXXXXXXXXXXXXXXXXX



**MAGNETIC CAP FOR
EASY PUT AWAY**

AVAILABLE COLOURS



ANTHRACITE
910.0030



**INDUSTRIAL
GREEN**
910.0031



TAUPE
910.0032



ORANGE
910.0033



LIGHT GREY
910.0034



RED
910.0035

FORMITABLE XL FACTS

76 CM X 120 CM Ø
FLOOR PLATE
74 CM Ø



Material

GALVANISED METAL
POWDER COATED IN
FINE TEXTURE

Weight product

48 KG

Dimensions product

76 CM X 120 CM Ø
Floor plate: **74 CM Ø**

Dimensions packaging (LxWxH)

Top plate: **121 x 121 x 7 CM**
Floor plate + pole:
82 x 82 x 12 CM

Weight product+packaging

Top plate: **23.5 KG**
Floor plate + pole: **29 KG**

Washing instructions

Easy cleaning with lukewarm water
and neutral soap

Features

- **Special plug to close hole for parasol (when not in use)**
- **Easy-to-store plug (with magnet)**
- **Suitable for in- and outdoor use**



INDOOR



OUTDOOR

XXXXXXXXXXXXXXXXXXXXXXXXXXXX

TABLITSKI

XXXXXXXXXXXXXXXXXXXXXXXXXXXX

fatboy®



AVAILABLE COLOURS



BLACK
900.6500



LIGHT GREY
900.6500.1



BLUE
900.6500.2



ORANGE
900.6500.3



LIME GREEN
900.6500.4



PINK
900.6500.5



RED
900.6500.6

TABLITSKI FACTS

40 x 40 x 30 CM



Material
STEEL / RUBBER

Coating
POWDER COATING

Weight product
5.5 KG

Dimensions product (LxWxH)
40 x 40 x 30 CM

Dimensions packaging (LxWxH)
41 x 41 x 7 CM

Weight product+packaging
6 KG

Features

- Bold and sturdy look
- Suitable for in- and outdoor use
- Available in 7 colours
- Perfect fit with the Headdemock



INDOOR



OUTDOOR

XXXXXXXXXXXXXXXXXXXXXXXXXXXX

MAGWEL

XXXXXXXXXXXXXXXXXXXXXXXXXXXX

fatboy®



AVAILABLE COLOURS



RED
910.0001

MAGWEL FACTS

92 MM x 95 MM Ø



Material
ABS

Coating
RUBBER

Weight product
1 KG

Dimensions product (LxW)
92 MM x 95 MM Ø

Dimensions packaging (LxWxH)
10 x 10 x 11 CM

Weight product+packaging
0.5 KG

Features

- Use anywhere and for anything you want
- Super strong magnet
- Beautiful rubber coating finish



INDOOR



OUTDOOR

XXXXXXXXXXXXXXXXXXXXXXXXXXXX

DOLLY & HOT DOG

XXXXXXXXXXXXXXXXXXXXXXXXXXXX



AVAILABLE COLOURS



DOLLY WHITE
900.3000



DOLLY SILVER
900.3001



DOLLY ANTHRACITE
900.3002



HOT DOG WHITE
900.3010



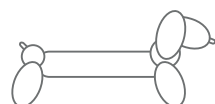
HOT DOG SILVER
900.3011



HOT DOG ANTHRACITE
900.3012

DOLLY & HOT DOG FACTS

115 x 103 CM & 153 x 80 CM



Material
PVC

Weight product
Dolly: **2.8 KG**
Hot Dog: **3.7 KG**

Dimensions product (WxH)
Dolly: **115 x 103 CM**
Hot Dog: **153 x 80 CM**

Dimensions packaging (LxWxH)
Dolly: **35 x 32 x 14 CM**
Hot Dog: **36 x 32 x 10 CM**

Weight product+packaging
Dolly: **2.9 KG**
Hot Dog: **3.8 KG**

Washing Instructions

Clean carefully with soft cloth and lukewarm water (if necessary with neutral soap) Do not use any cleaning materials that contain chemicals

Batchnumber

Around valve location

Features

- Inspired by and shaped after the iconic shapes of balloon animals
- Inflatable and deflatable
- Use electric pump to inflate
- Available in 3 stylish colours
- Stunning pieces of affordable art that will brighten up your day!



INDOOR

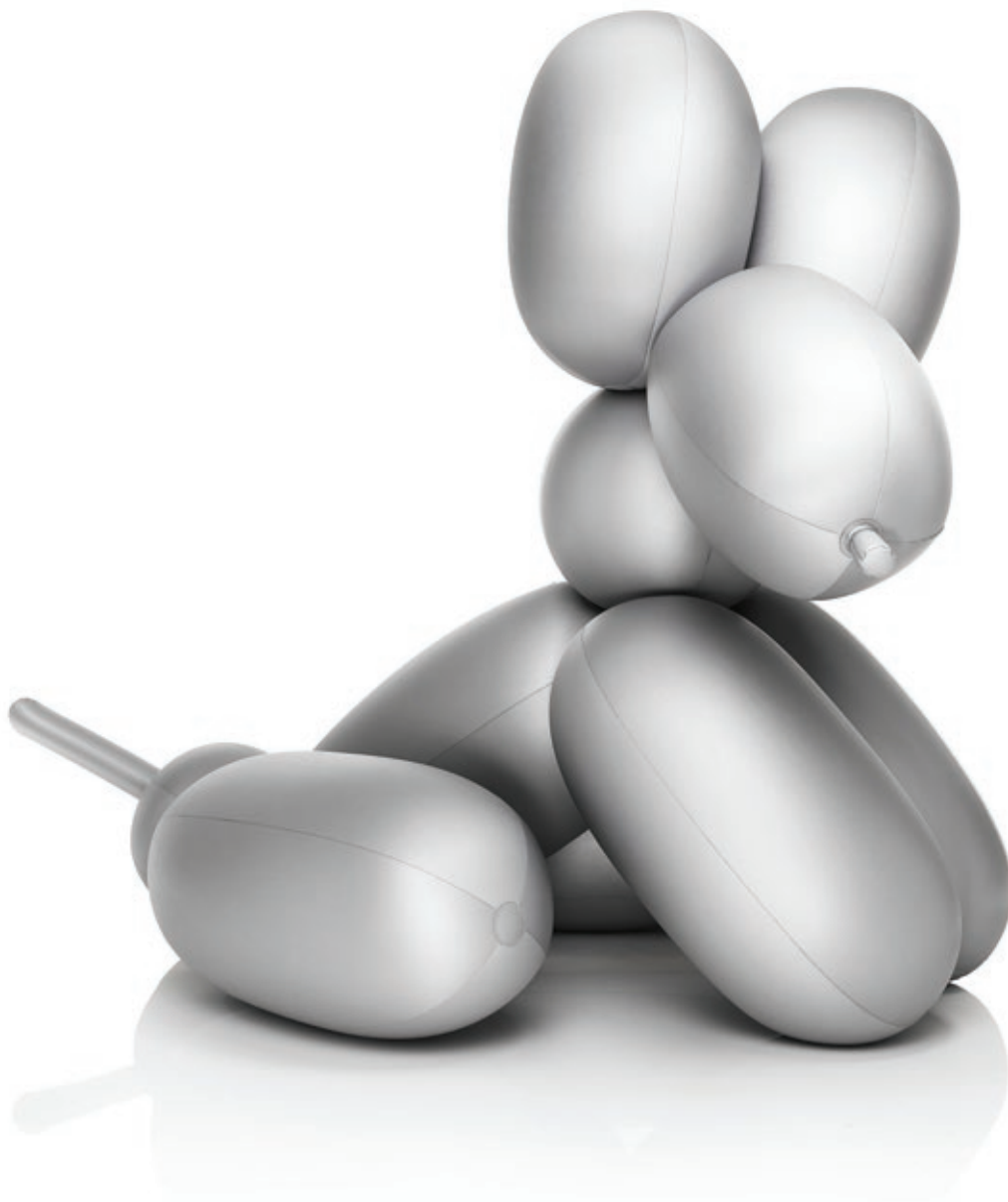


OUTDOOR

SJEF BALLOON COLLECTION

BIG DOG

fatboy®



AVAILABLE COLOURS



WHITE
900.3020



SILVER
900.3021



ANTHRACITE
900.3022

BIG DOG FACTS

250 x 165 x 200 CM



Material
PVC

Weight product
9.7 KG

Dimensions product (LxWxH)
250 x 165 x 200 CM

Dimensions packaging (LxWxH)
60 x 46 x 19 CM

Weight product+packaging
9.9 KG

Washing Instructions
Clean carefully with soft cloth and lukewarm water (if necessary with neutral soap) Do not use any cleaning materials that contain chemicals

Batch number
Around valve location

Features
• **The ultimate tongue in cheek statement piece!**
• **Inflatable and deflatable**
• **Use electric pump to inflate**



INDOOR



OUTDOOR

XXXXXXXXXXXXXXXXXXXXXXXXXXXX

DESSWERRUM

XXXXXXXXXXXXXXXXXXXXXXXXXXXX

fatboy®



AVAILABLE COLOURS



SAND, PINK
900.6000.1



SAND, GREEN
900.6000.2



SILVER, PINK
900.6000.3



LIGHT GREY,
GREEN
900.6000.4



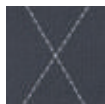
LIGHT SAND,
ORANGE
900.6000.5



OLIVE, GREEN
900.6000.6



BROWN, PINK
900.6000.7



ANTHRACITE,
GREY
900.6000.8



BRABANTSBONT,
RED
900.6000

DESSWERRUM FACTS

45 x 45 CM



Material
SUNBRELLA FABRIC
NATURAL RUBBER

Material Brabantsbont
COTTON
NATURAL RUBBER

Weight product
0.8 KG

Dimensions product (LxW)
40 x 40 CM

Dimensions packaging (LxWxH)
40 x 10 x 10 CM

Weight product+packaging
1 KG

User recommendations

- Water temperature: max. 70°C
- Fill to maximum 1.7 litres
- Tip: once cooled off, give the water to your plants after use
- Iron your Desswerrum on a regular basis to maintain its water-repellence.

Washing Instructions Brabantsbont
Wash cover at max. 40°C
(remove water bottle)



Washing Instructions Sunbrella

- Wipe clean with a moist cloth or water and soap
- Wash cover at 40°C
- Wash inside out (remove water bottle)



Batchnumber

In the cover on a white label

Features

- Stays hot for hours
- Cushion and hot-water bottle all in one
- Suitable for in- and outdoor use



INDOOR



OUTDOOR

XXXXXXXXXXXXXXXXXXXXXXXXXXXX

KLAID

XXXXXXXXXXXXXXXXXXXXXXXXXXXX

fatboy®



AVAILABLE COLOURS



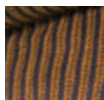
TAUPE / NEON
ORANGE STRIPE
911.0001



LIGHT GREY /
NEON YELLOW
STRIPE
911.0002



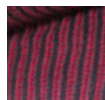
DARK GREY /
NEON PINK
STRIPE
911.0003



TAUPE /
NEON ORANGE
911.0004



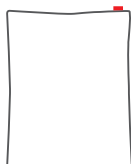
LIGHT GREY /
NEON YELLOW
911.0005



DARK GREY /
NEON PINK
911.0006

KLAID FACTS

130 x 200 CM



Material

**100% HIGH QUALITY
COTTON (KNITTED)**

Dimensions product (LxW)

130 x 200 CM

Weight product

1.5 - 1.8 KG

Dimensions packaging (LxWxH)

45 x 43 x 8.5 CM

Weight product+packaging

Stripe: 1.5 KG

Rib: 1.8 KG

Washing Instructions

- Put your Klad in a pillow cover (or anything else that will protect the knitting) and wash gently at max. 30° (non chlorine bleach)
- Dry flat



Features

- The perfect accessory to have laying around the house: instant coziness!
- Beautiful basic color palette with neon detailing
- Supersized



INDOOR